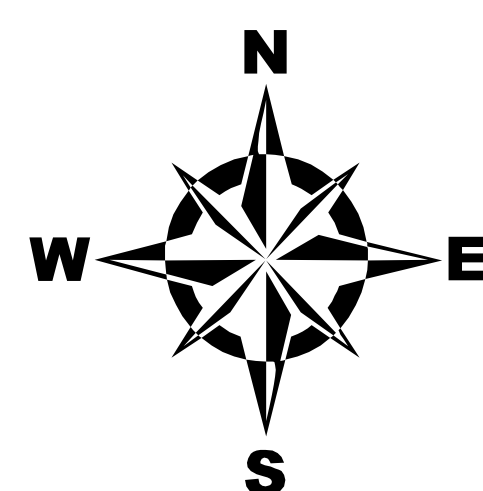


SIGNIFICANT HABITATS IN THE TOWN OF PINE PLAINS, NY



SCALE 1:17,000

(For greater detail see sheets 1 & 2)

0 0.5 1 2 Kilometers

0 0.5 1 2 Miles



Hudsonia Ltd.
P.O. Box 66
Red Hook, NY 12571
www.hudsonia.org

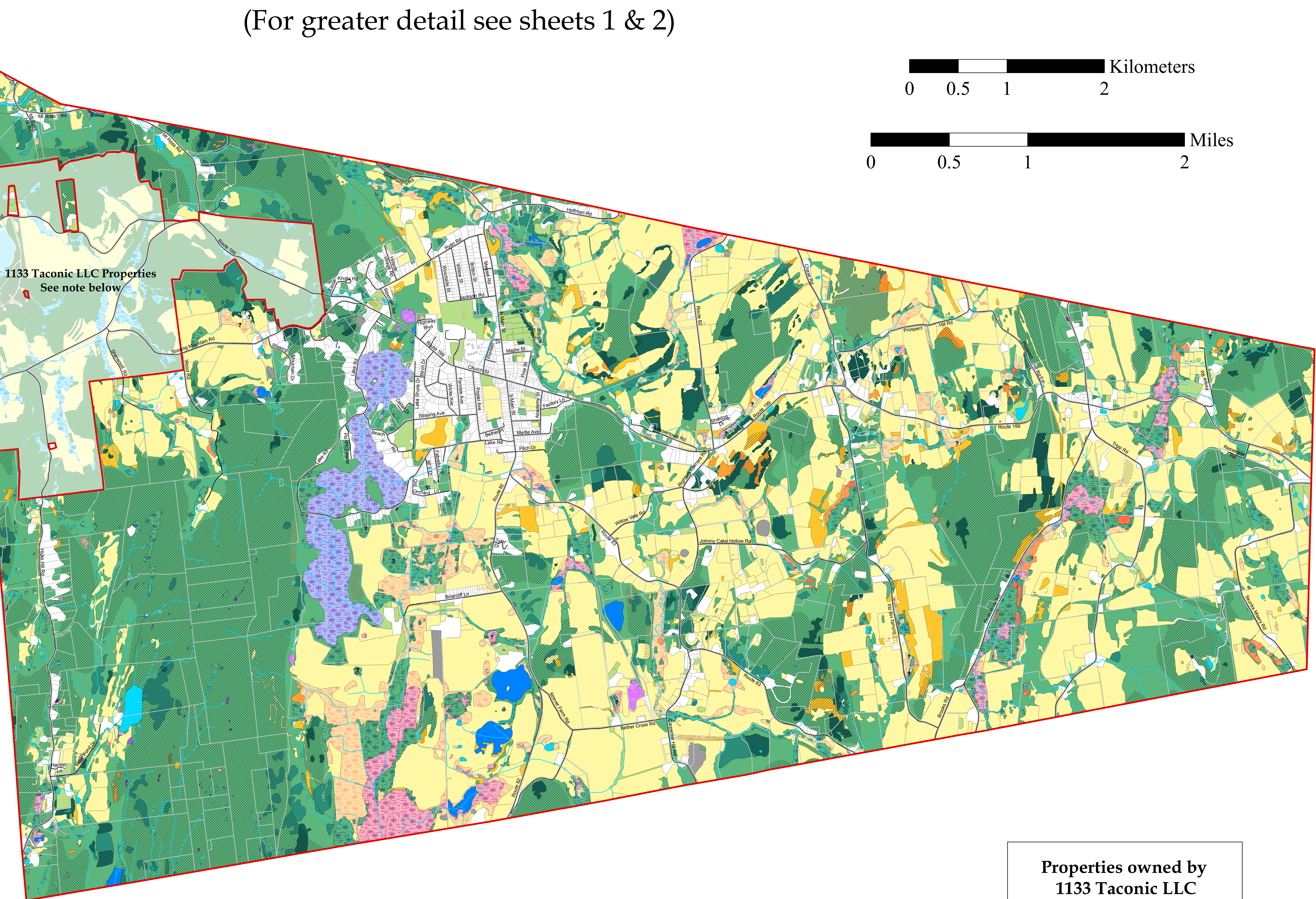
- Town & study area boundary
- Road
- ? Question
- Tax parcels (2008)
- Developed areas & non-significant habitats

Upland Habitats

- Upland hardwood forest
- Upland mixed forest
- Upland conifer forest
- Oak-heath barren
- Red cedar woodland
- Upland shrubland
- Upland meadow
- Cultural
- Waste ground
- Crest/ledge/talus
- Calcareous crest/ledge/talus

Wetland Habitats

- Hardwood & shrub swamp
- Mixed forest swamp
- Intermittent woodland pool
- Buttonbush pool
- Kettle shrub pool
- Circumneutral bog lake
- Marsh
- Wet meadow
- Calcareous wet meadow
- Fen
- Open water
- Constructed pond
- Seep
- Stream
- Spring



An important caution:

This map is suitable for general land-use planning, but is not suitable for detailed planning and site design, or for jurisdictional determinations (e.g., for wetlands). Boundaries of wetlands and other habitats depicted here are only approximate.

Habitats were identified through map analysis and aerial photograph interpretation, and as many locations as practicable were field-verified. Mapping and field work were done primarily by Hudsonia biologists Catherine McGlynn and Nava Tabak. Color infrared photographs in the USGS NAPP series, taken in spring 1994 (scale 1:40,000), were used for stereoscopic photointerpretation. Habitats were digitized onscreen over color infrared orthophoto images taken in spring 2004, obtained from the New York State GIS Clearinghouse. The report prepared in conjunction with these maps (McGlynn et al. 2009) explains the habitat identification and mapping methods, describes the ecological significance of each habitat type, and offers conservation recommendations.

Road locations and names were obtained from the New York State GIS Clearinghouse website and modified by us where necessary.

Some habitat types can only be identified in the field. Question marks on the map indicate some unchecked areas where such habitats may occur.

The map was created using ArcView 9.2 GIS software on a Dell INSPIRON 9400 computer and printed on a Hewlett Packard DesignJet 800PS plotter.

Funds for this project were provided to Hudsonia Ltd. by the Dyson Foundation, the Millbrook Tribute Garden (through the Dutchess Land Conservancy), and the Educational Foundation of America.

For more information contact Nava Tabak or Gretchen Stevens, Hudsonia Ltd., 845-758-0600.

Properties owned by 1133 Taconic LLC

- Forested upland
- Non-forested upland
- Pond/stream
- Vegetated wetland

Note: all properties owned by 1133 Taconic LLC were excluded from Hudsonia's study area by agreement with the Town of Pine Plains. Ecological communities mapped on these parcels by Matthew D. Rudikoff Associates, Inc. are included here for display purposes, but are shown only in four broad categories. For additional detail on the ecological communities in this area see Sheet 2.