

5

supervisor@pineplains-ny.gov

From: Dutcavich, Mathew <mdutcavich@dutchessny.gov>
Sent: Wednesday, February 17, 2021 9:07 AM
To: lori patricola; 'Heather M. Emerich, Highway Superintendent'; Pulver, Gregg
Cc: Balkind, Robert
Subject: Willow Vale Bridge (Bridge PP-5)

Everyone,

I wanted to give you an update on the bridge replacement project as we have a contractor on board and will be building it this season. Our contractor is currently targeting March 15th to start the work, weather permitting. They have reached an agreement with a neighboring owner and will be bringing some equipment and materials out in the coming weeks, so you may see some limited activity.

They're required to place message boards up 1 week prior to closure, so road users will be notified in advance of the closure when the time comes. I'll let everyone know when things firm up in the coming weeks. We will also be mailing out notices to nearby residents, emergency services, schools, etc.

If you have any questions, feel free to reach out.

Thanks,

Matt Dutcavich, P.E.
Assistant Civil Engineer II
Dutchess County Dept. of Public Works - Engineering Division
626 Dutchess Turnpike
Poughkeepsie, NY 12603
Phone: (845) 486-2925 Fax: (845) 486-2940
Email: mdutcavich@dutchessny.gov

www.dutchessny.gov



**Department of
Transportation**

Darragh

ANDREW M. CUOMO
Governor

MARIE THERESE DOMINGUEZ
Commissioner

LANCE MacMILLAN, P.E.
Regional Director

*Rec'd
2/13/2021
gph*

January 28, 2021

Robert H. Balkind, P.E.
Commissioner
County of Dutchess
Department of Public Works
626 Dutchess Turnpike
Poughkeepsie, NY 12603

Re: Study #820-5957; File 13-22-180; T20-182
Speed Limit Study
Strever Farm Road; Bethel Cross Road
Carpenter Hill Road; Chase Road
Town of Pine Plains, Dutchess County

Dear Commissioner Balkind:

This is in response to your October 5, 2020 correspondence to the New York State Department of Transportation (NYSDOT) requesting that NYSDOT initiate a speed limit study on the subject Town roads within the Town of Pine Plains, Dutchess County.

A formal study concerning reduced speed limits on Strever Farm Road, Bethel Cross Road, Carpenter Hill Road, and Chase Road in the Town of Pine Plains, Dutchess County has been completed.

NYSDOT found it appropriate to establish a 35 mph speed limit on Strever Farm Road between State Route 82 and State Route 82, 35 mph on Bethel Cross Road between Carpenter Hill Road and Strever Farm Road, 35 miles per hour on Carpenter Hill Road between CR 83 and the Town of Stanford Town Line, and 35 mph on Chase Road between Ancram Town line and State Route 199 in the Town of Pine Plains. It is the responsibility of the Town of Pine Plains Highway Superintendent to install the new 35 mph speed limit signs as specified in the Manual of Uniform Traffic Control Devices (MUTCD). It is also the responsibility of the Highway Superintendent to determine if certain existing conditions on the roadway may require additional signing.

Attached is a copy of the Official Notice of Orders for your files.

Thank you for your interest in and support for the transportation system. If you require further information on this request, please contact the Regional Traffic and Safety Group at (845) 437 3320.

Very truly yours,

John Cummins for John Cummins
John Cummins
Assistant Engineer

Attachment

cc: Honorable Judy Harpp, Town Clerk, Town of Pine Plains

STATE OF NEW YORK - DEPARTMENT OF TRANSPORTATION
TRAFFIC OPERATIONS BUREAU

NOTICE OF ORDER

Study No: 820-5957
File: 13.22-180
Troop: K

THE DEPARTMENT OF TRANSPORTATION HAS FILED AN ORDER WITH THE SECRETARY OF STATE WHEREBY:

SECTION: 1113.22 SUBDIVISION: (d) PARAGRAPH: _____

OF THE DEPARTMENT'S REGULATIONS IS ☒ ADDED ☐ AMENDED to read as follows: ☐ REPEALED

35 MPH on Strever Farm Road (a Town Highway) from Route 82 (RM 82 8201 1362 on SH 8342) to Route 82 (RM 82 8201 1370 on SH 8342), a distance of 1.0 miles +/-.

The above order will be effective upon the installation, modification or removal of the necessary traffic control device (s) required by and conforming to the State Manual of Uniform Traffic Control Devices.

1/28/2021 APPROVED BY: L. Zimmer GS Acting R.T.E.
(DATE) (SIGNATURE) (TITLE)

DESCRIPTION: This action establishes a 35 mph linear speed limit on the entire length of Strever Farm Road from Route 82 to Route 82, a distance of 1.0 miles +/- in the Town of Pine Plains.

COUNTY: Dutchess

OTHER RELATED ACTIONS ☒ NONE

LOCALITY: T/ Pine Plains

☐ _____
(Identify)

cc:

☐ CITY
☐ VILLAGE
☒ TOWN
☐ COUNTY SUPT.

☒ SHERIFF
☒ STATE POLICE
☐ PERMITTEE

☒ Pine Plains POLICE DEPARTMENT
☒ REGION 8 TRAFFIC ENGINEER
☐ OTHER _____
(Specify)

STATE OF NEW YORK - DEPARTMENT OF TRANSPORTATION
TRAFFIC OPERATIONS BUREAU

NOTICE OF ORDER

Study No: 820-5957
File: 13.22-180
Troop: K

THE DEPARTMENT OF TRANSPORTATION HAS FILED AN ORDER WITH THE SECRETARY OF STATE WHEREBY:

SECTION: 1113.22 SUBDIVISION: (e) PARAGRAPH: _____

OF THE DEPARTMENT'S REGULATIONS IS ☒ ADDED ☐ AMENDED to read as follows: ☐ REPEALED

35 MPH on Bethel Cross Road (a Town Highway) from Strever Farm Road to Carpenter Hill Road, a distance of 0.6 miles +/-.

The above order will be effective upon the installation, modification or removal of the necessary traffic control device (s) required by and conforming to the State Manual of Uniform Traffic Control Devices.

1/28/2021
(DATE)

APPROVED BY:

L. Zimmer
(SIGNATURE)

GS
Acting R.T.E.
(TITLE)

DESCRIPTION:

This action establishes a 35 MPH linear speed limit on the entire length of Bethel Cross Road from Strever Farm Road to Carpenter Hill Road, a distance of 0.6 miles +/- in the Town of Pine Plains.

COUNTY: Dutchess

OTHER RELATED ACTIONS ☒ NONE

LOCALITY: T/ Pine Plains



(Identify)

cc:

☐ CITY
☐ VILLAGE
☒ TOWN
☐ COUNTY SUPT.

☒ SHERIFF
☒ STATE POLICE
☐ PERMITTEE

☒ Pine Plains POLICE DEPARTMENT
☒ REGION 8 TRAFFIC ENGINEER
☐ OTHER _____

(Specify)

STATE OF NEW YORK - DEPARTMENT OF TRANSPORTATION
TRAFFIC OPERATIONS BUREAU

NOTICE OF ORDER

Study No: 820-5957
File: 13.22-180
Troop: K

THE DEPARTMENT OF TRANSPORTATION HAS FILED AN ORDER WITH THE SECRETARY OF STATE WHEREBY:

SECTION: 1113.22 SUBDIVISION: (f) PARAGRAPH: _____

OF THE DEPARTMENT'S REGULATIONS IS ☒ ADDED ☐ AMENDED to read as follows: ☐ REPEALED

35 MPH on Carpenter Hill Road (a Town Highway) from the Town of Stanford / Town of Pine Plains Line to CR 83, a distance of 1.0 miles +/-.

The above order will be effective upon the installation, modification or removal of the necessary traffic control device (s) required by and conforming to the State Manual of Uniform Traffic Control Devices.

1/28/2021

(DATE)

APPROVED BY:

L. Zimmer

(SIGNATURE)

GS Acting R.T.E.

(TITLE)

DESCRIPTION: This action establishes a 35 MPH linear speed limit on the entire length of Carpenter Hill Road from the Town of Stanford / Town of Pine Plains Line to CR 83, a distance of 1.0 miles +/-, in the Town of Pine Plains.

COUNTY: Dutchess

OTHER RELATED ACTIONS ☒ NONE

LOCALITY: T/ Pine Plains

☐

(Identify)

cc:

☐ CITY

☐ VILLAGE

☒ TOWN

☐ COUNTY SUPT.

☒ SHERIFF

☒ STATE POLICE

☐ PERMITTEE

☒

Pine Plains

POLICE DEPARTMENT

☒

REGION 8

TRAFFIC ENGINEER

☐

OTHER _____

(Specify)

STATE OF NEW YORK - DEPARTMENT OF TRANSPORTATION
TRAFFIC OPERATIONS BUREAU

NOTICE OF ORDER

Study No: 820-5957
File: 13,22-180
Troop: K

THE DEPARTMENT OF TRANSPORTATION HAS FILED AN ORDER WITH THE SECRETARY OF STATE WHEREBY:

SECTION: 1113.22 SUBDIVISION: (g) PARAGRAPH: _____

OF THE DEPARTMENT'S REGULATIONS IS ☒ ADDED ☐ AMENDED to read as follows: ☐ REPEALED

35 MPH on Chase Road (a Town Highway) from Route 199 (RM 8202 1228 - 1229 on SH 1314) to the Town of Ancram / Town of Pine Plains Line, a distance of 0.9 miles +/-.

The above order will be effective upon the installation, modification or removal of the necessary traffic control device (s) required by and conforming to the State Manual of Uniform Traffic Control Devices.

1/28/2021

(DATE)

APPROVED BY:

L. Zimmer

(SIGNATURE)

Acting R.T.E.

(TITLE)

DESCRIPTION: This action establishes a linear speed limit on the entire length of Chase Road from Route 199 (RM 8202 1228 - 1229 on SH 1314) to the Town of Ancram / Town of Pine Plains Line, a distance of 0.9 miles +/-, in the Town of Pine Plains.

COUNTY: Dutchess

OTHER RELATED ACTIONS ☒ NONE

LOCALITY: T/ Pine Plains

☐

(Identify)

cc:

☐ CITY

☐ VILLAGE

☒ TOWN

☐ COUNTY SUPT.

☒ SHERIFF

☒ STATE POLICE

☐ PERMITTEE

☒

Pine Plains

POLICE DEPARTMENT

☒ REGION

8

TRAFFIC ENGINEER

☐ OTHER

(Specify)

81a

Valley Energy

5848 Route 9H
PO Box 430
Claverack, NY 12513

January 29, 2021

Town of Pine Plains Hwy. Dept.
20 Highway Blvd
Pine Plains, NY 12567
Atten: Heather Emerich, Highway Superintendent

Dear Heather,

Thank you for the opportunity to provide you with our products and services. Specifically, the replacement of your boiler at the Highway Garage.

We can offer solutions in both Fuel Oil and Propane. We will leave all near boiler equipment including the feeder valve, air elimination, purge stations, circulators, expansion tank, relay control in place and simply replace the boiler and the burner.

The Oil solution is a TrioPROPC10470 with a Riello Burner. This has a BTU input of 658,000 BTU/hr. and operates at 87% AFUE. Submittals attached.

The cost of this boiler replacement is \$15,500.00

We understand the need to replace the outside oil tank and containment system. We will forward you a quote for that in the days to come.

The propane solution is an Ideal Gallant cascade system. Again, we will leave all the near boiler equipment in place and just change the boiler and burner. The Gallant system will be made up of two boilers cascaded together. They will modulate from a very moderate BTU load up to 750,000 BTU's. Submittals attached.

If propane is the solution you choose, we strongly recommend another 1000-gallon propane tank, next to the other on. Right where the oil tank is. The cost is \$4,200, not including the excavation.

Propane does not burn as hot as oil. In large BTU applications such as this, it has been our experience that using propane will cost the town more each year in fuel then if you stay with oil.

Valley Energy will provide you with a full year warranty (parts and labor) from completion date of installation. All work to be done in a neat and professional manner.

Terms:

- 1/2 down before start of job.
- The balance will be invoiced at Net 30 days, pending credit approval.

Scheduling:

- In order for us to accurately plan and schedule your installation in a timely manner, please provide us with as much lead time notification as possible.
- every effort will be made to meet scheduled installation times but due to the nature of our business some scheduling conflicts may occur.
- Our goal is to minimize last minute scheduling conflicts and give you as much notice as possible when rescheduling must occur.

All material is guaranteed to be as specified and the above work to be performed in accordance with the drawings and specifications submitted for the above work and completed in a substantial workmanlike manner. Any alteration or deviation from above specifications involving extra costs will become an extra charge over and above the estimate. All agreements contingent upon strikes, accidents or delays beyond our control.

ACCEPTANCE OF PROPOSAL

The above prices, specifications and conditions are satisfactory and hereby accepted. You are authorized to do the work as specified. Payment Terms will be made as outlined above.

Date: _____

Signature: _____

Please return signed proposal with deposit
Capital Improvement

Sincerely,

Tim Wyman, Sales
518-851-3921
twyman@valleyenergy.com



PC10470 TRIO Commercial Cast Iron Boiler

Engineering
Submittal
Sheet

General Engineering Specifications



Contractor shall furnish and install, where indicated on the drawings, ____ PC10470 PurePro Trio hot water boiler(s), pressure fired boiler burner units suitable for forced draft firing with #2 fuel oil, natural gas or propane gas.

Boilers shall be constructed of GG20 high silicon cast iron. They shall be of pressurized wet base sectional construction utilizing precision machined push nipples pressed into a machined nipple port in the section eliminating the need for any gasket material which would be subject to deterioration due to corrosion or oil based chemicals.

Sections shall be manufactured and tested in accordance with ASME Section IV requirements for low pressure boilers. Each cast section shall be permanently marked with the ASME symbol and the maximum allowable working pressure of 58 PSI.

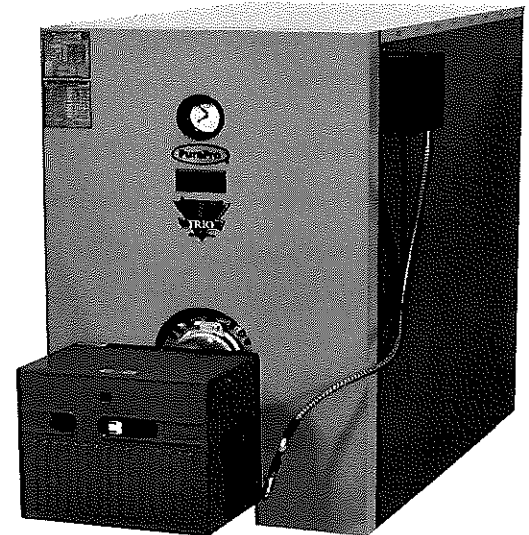
The boiler burner unit shall be a three pass wet base construction suitable for forced draft firing. The boiler burner unit shall be constructed so that only a vent shall be required that extends three feet above the highest point of the roof. The boiler flue connection shall be of cast iron construction for long life.

The boiler shall be furnished as fully assembled casting or as a knocked down unit for field erection according to manufacturer's instructions.

The boiler burner unit is designed to eliminate the need for refractory material or a combustion chamber target wall.

Access to the boiler firesides for inspection shall be from the front clean out door and the burner swing door. The burner swing door shall be lined with light weight refractory insulation and shall be equipped with observation/test port. The burner swing out door to be field adjustable to allow for left or right hand hinging. The seal between the door and the boiler casting shall be permanent gasket for repeated positive sealing.

The boiler jacket shall be constructed of heavy gauge steel with 3" insulation and have a rust resistant powder coated finish. The jacket shall be capable of being installed after system piping has been connected to the boiler. Jacket is to have a removable front door to allow complete access to burner swing door and cleanout door. The boiler jacket shall be capable of being installed after the system piping has been connected to the boiler assembly.



Boiler Approval Number

Massachusetts Approval

C1-0916-70

Boyertown furnace Co. reserves the right to make changes without
notice due to continuing engineering and technological changes
3-2-2017



PC10470

TRIO Commercial Cast Iron Boiler

Engineering
Submittal
Sheet

Boiler Controls

Operating control - Hydrolevel HydroStat Fuel Smart 3250+. Thermal targeting bases boiler temperature on demand or outdoor reset with optional outdoor sensor. Indicating lights.

Auxiliary High Limit Control - Honeywell L4006E manual reset.

Low Water Cut-Off - Manual reset included as part of Hydrolevel Hydrostat.

Temperature-Pressure Gauge - Round 3-1/2" visible through the jacket door.

Relief Valve - ASME rated relief valve sized to exceed the boiler gross output and shall be factory set to relieve pressure at 30 PSI. 50 PSI Optional.

Fuel Burning Equipment

The burners shall incorporate all necessary devices and controls to make a complete fuel burning system for the type of fuel specified, and shall bear the listing label of Underwriters Laboratories, Inc.

The oil burner shall be a model F15 as manufactured by Riello Burners North America. The burner shall be designed for No. 2 fuel oil and shall be of the forced draft pressure atomizing type. The oil burner shall be furnished complete with integral motor driven blower, oil pump, oil nozzle, oil solenoid valves, direct spark ignition assembly and primary control which utilizes a cadmium sulfide flame detector.

The gas burner shall be model G400 as manufactured by Riello Burners North America, model 301 as manufactured by Carlin Combustion, or CG 10.4 as manufactured by R.W. Beckett. The burner shall be of the forced draft suitable for burning natural or LP gas. The gas burner shall be furnished with an integral motor driven blower, combustion safeguard control with pre-purge, air flow switch, complete gas train including pressure regulator. Minimum inlet gas pressure 6". Maximum gas inlet gas pressure 14"

Electrical Supply

Electrical supply to the boilers will be 120 Volts, 60Hz, 1 phase.

Clearances to Combustibles

Top - 24 IN.
Front - 24 IN.
Flue Connector Single Wall Vent Piping - 18 IN.
Rear - 6 IN.
Sides - 6 IN.



PC10470 TRIO Commercial Cast Iron Boiler

Engineering
Submittal
Sheet

Boiler Performance Data

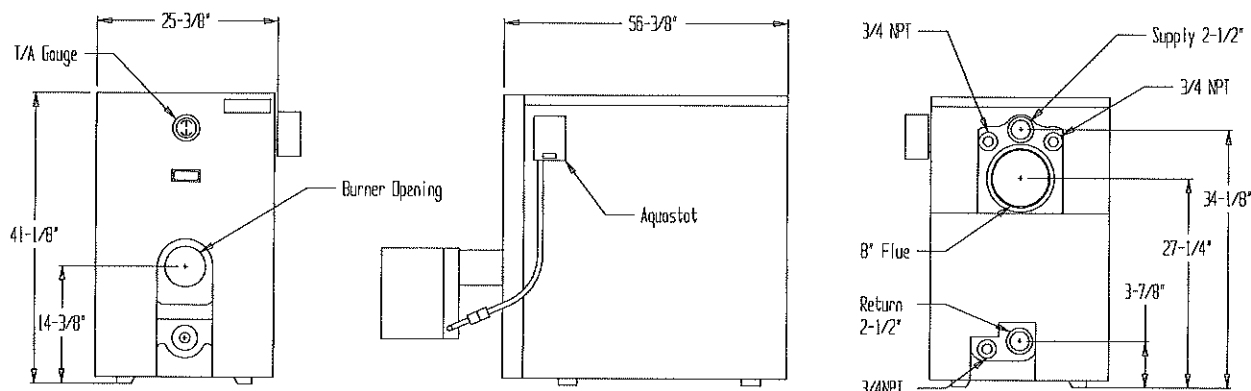
Number of Sections	10
Oil Input	4.70 GPH
Gas Input	658,000 Btu/Hr
Gross Output Oil	575,000 Btu/Hr
Gross Output Gas	559,300 Btu/Hr
Net Output Oil	500,000 Btu/Hr
Net Output Gas	485,000 Btu/Hr
Net Rating Sq. FT	3335

General Data

Maximum Allowable Working Pressure	58 PSI
Water Content	29 Gallons
Standard Relief Valve Setting	30 PSI
Standard Relief Valve Size	3/4" x 1"
Standard Relief Valve Capacity	970,000
Bare Block Weight	1300 Lbs
Front Section Weight	145 Lbs
Rear Section Weight	150 Lbs
Intermediate Section Weight	110 Lbs
Shipping Weight (Approx.)	1660 Lbs
Operating Weight (Approx.)	1807 Lbs

Dimensional Data

Length With Jacket	56-3/8"
Width With Jacket	25-3/8"
Height With Jacket	41-1/8"
Length Bare Block with Flue and Burner Door	53-38"
Width Bare Block	19"
Height Bare Block	37"



Boyetown furnace Co. reserves the right to make changes without
notice due to continuing engineering and technological changes
3-2-2017

TRIO Commercial Cast Iron Boiler

PurePro®



CAST IRON BOILERS

Features

- 3-pass wet-base Euro design
- Manufactured with corrosion and thermal shock resistant GG20 cast-iron
- 58 PSI cast-iron construction
- Easy-access full open reversible swing-out door for easy access to combustion area
- Super-efficient, 3-pass flue/heat exchanger, does not require refractory material in chamber area
- Low mass and low water volume
- Multi-Fuel capability: Oil, Natural Gas or Propane. Changing source of fuel does not void warranty.
- Extra heavy 3" insulation for low jacket and standby losses
- 19½" wide block allows for easy access through standard size doorways
- ASME listed
- Fuel Smart HydroStat® 3250 control

Temperature Limit Control:
Designed for cold start boilers

Low Water Cut-Off:
Provides protection against potentially dangerous low water conditions

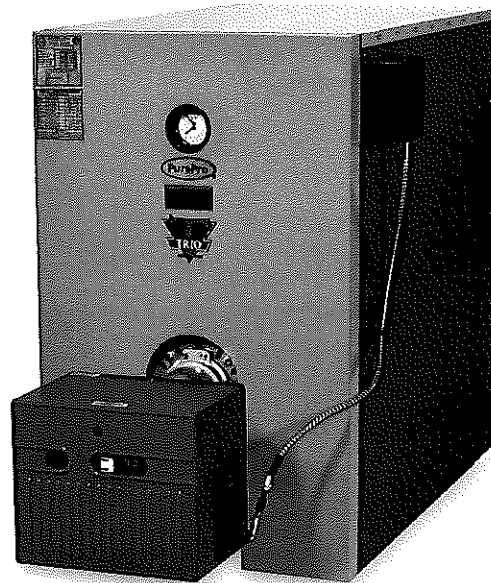
Boiler Reset Control:
Utilizes Thermal Targeting™ technology to conserve fuel by monitoring heating demand and establishing target boiler temperatures below the high limit setting

The TRIO® Commercial Boiler by PurePro® with its highly efficient, 3-pass design offers Multi-Fuel flexibility, by using either oil or gas burners. The GG20 cast-iron block, with a 58 PSI rating and easy access swing door, is unsurpassed in durability and efficiency, providing years of trouble-free operation.

The 7 models ranging from 240 to 629 MBH, are suitable for commercial or multi unit buildings. Systems are extensively tested and are ASME certified.

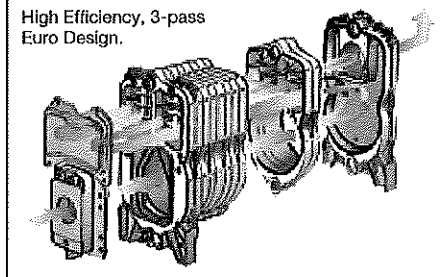
The TRIO Commercial Heat Exchanger Path is up to 15 feet in length, and the 3-pass design heats more surface area per gallon burned, with 25% less heat lost than pin-type boilers.

Industry leading 20 year Limited Warranty

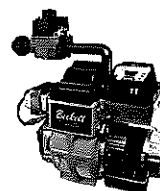


Shown with Riello Oil Burner

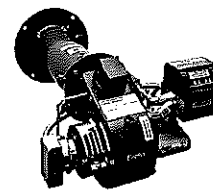
High Efficiency, 3-pass Euro Design.



Optional Burners:



Beckett CG Gas Burner



Carlin 301 Gas Burner

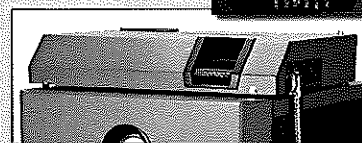
PurePro Energy Manager Plus II

The optional PurePro Energy Manager Plus II integrates a five-zone relay board, boiler aquastat, low water cutoff, and boiler reset. This simple-to-use control comes completely pre-wired.

The PurePro Energy Manager Plus II features the Honeywell AQ25042B multiple zone control and the Hydrolevel 3250 HydroStat. The HydroStat 3250 uses Thermal Targeting to match the heat load and boiler water temperature.

To further enhance fuel efficiency, the fuel smart HydroStat is also equipped with a thermal pre-purge feature. When activated, the control will purge standing heat in the boiler at the start of any thermostat call, supplying the free latent energy to the heating zone that is calling.

FuelSmart HydroStat 3250



Boiler Mount

5 year Warranty

Ratings

Boiler / Jacket / Trim / Package #	Firing Rate (#2 Fuel)	Oil Input BTU/hr	Oil Output BTU/hr	Net Output (BTU/hr)	Oil Combustion Efficiency	Gas Input BTU/hr	Gas Output BTU/hr	Gas Combustion Efficiency	Net Output (Sq. ft.)	Water Capacity (gal.)	Shipping Weight
PROPC6230 (Assembled Block)	2.30	322,000	276,000	240,000	85.7	322,000	268,000	83.2	1600	17	1170
PROPC7290 (Assembled Block)	2.90	406,000	352,000	306,000	86.7	406,000	342,000	84.2	2040	20	1300
PROPC8350 (Assembled Block)	3.50	490,000	426,000	370,000	86.9	490,000	413,500	84.4	2465	23	1435
PROPC9410 (Assembled Block)	4.10	574,000	501,000	436,000	87.3	574,000	487,900	85	2910	26	1540
PROPC10470 (Assembled Block)	4.70	658,000	575,000	500,000	87.3	658,000	559,300	85	3335	29	1660
PROPC11530 (Assembled Block)	5.30	742,000	649,000	564,000	87.4	742,000	631,400	85.1	3760	32	1785
PROPC12590 (Assembled Block)	5.90	826,000	723,000	629,000	87.5	826,000	703,700	85.2	4195	35	1900

Burners

Boiler Model #	Oil Burner Model #	Oil Burner Part #	Gas Burner Model #	Gas Burner Part #
PROPC6230	Riello F10	706016	Beckett CG10 Carlin 301 Riello 400	706026 706056 706066
PROPC7290	Riello F15	706017	Beckett CG10 Carlin 301 Riello 900	706027 706057 706067
PROPC8350	Riello F15	706017	Beckett CG10 Carlin 301 Riello 900	706028 706058 706068
PROPC9410	Riello F15	706017	Beckett CG10 Carlin 301 Riello 900	706029 706059 706069
PROPC10470	Riello F15	706017	Beckett CG10B Carlin 301 Riello 900	706030 706060 706070
PROPC11530	Riello F20	706021	Beckett CG10B Carlin 301 Riello 900	706031 706061 706071
PROPC12590	Riello F20	706021	Beckett CG10B Carlin 301 Riello 900	706032 706062 706072

Dimensions (all models)

Cabinet Height	41-1/8"
Cabinet Width	25-3/8"
Bare Boiler Block Width	19"
Supply Outlet Size NPT	2-1/2"
Supply Outlet Height C.L.	34-1/8"
Return Size NPT	2-1/2"
Return Outlet Height C.L.	3-7/8"
Flue Outlet Diameter	8"
Flue Outlet Height C.L.	27-1/4"

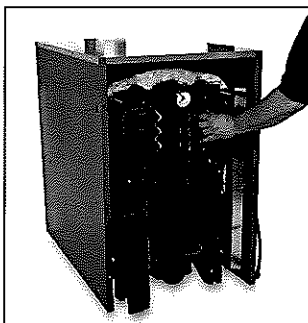
Dimensions

Boiler Model #	Cabinet Length	Bare Boiler Block Length
PROPC6230	37-1/2"	34-3/8"
PROPC7290	42-1/4"	39-1/8"
PROPC8350	46-7/8"	43-3/4"
PROPC9410	51-3/4"	48-1/2"
PROPC10470	56-3/8"	53-3/8"
PROPC11530	61-1/8"	58"
PROPC12590	65-7/8"	62-3/4"

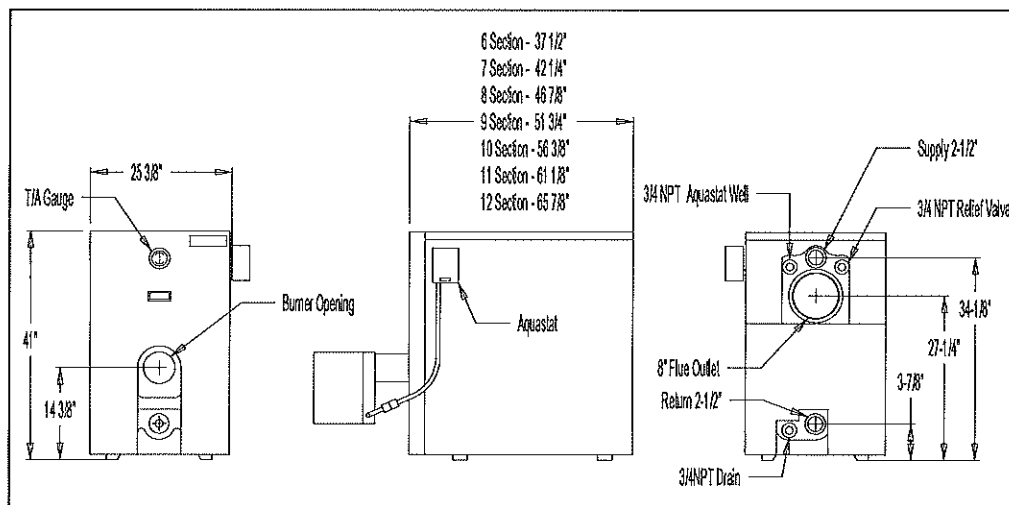
Commercial Parts Kit

(Standard w/all boilers, kit packed with burners)

- 1/2" x 1/4" Bushing
- 3/4" Street Elbow
- 30 PSI Relief Valve
- 3/4" x 6" Nipple
- 3/4" x 5" Nipple
- 3/4" Elbow
- 2-1/2" x 2-1/2" x 3/4" Tee (1)
- 2-1/2" Elbow
- 2-1/2" x 8" Nipple
- 2-1/2" x 4" Nipple
- T & A Gauge
- 3/4" Drain Valve
- HydroStat 3250
- Aquastat
- Immersion Well
- 10' Temperature Probe
- L4006E1109 B 130 to 240°F
- 3/4" Standard Well
- Ground Wire
- Stainless Floor Blanket



Superior serviceability.
Complete access to all three passes.



TRIO Commercial Cast Iron Boiler

PurePro®



CAST IRON BOILERS

Features

- 3-pass wet-base Euro design
- Manufactured with corrosion and thermal shock resistant GG20 cast-iron
- 58 PSI cast-iron construction
- Easy-access full open reversible swing-out door for easy access to combustion area
- Super-efficient, 3-pass flue/heat exchanger, does not require refractory material in chamber area
- Low mass and low water volume
- Multi-Fuel capability: Oil, Natural Gas or Propane. Changing source of fuel does not void warranty.
- Extra heavy 3" insulation for low jacket and standby losses
- 19½" wide block allows for easy access through standard size doorways
- ASME listed
- Fuel Smart HydroStat® 3250 control

Temperature Limit Control:
Designed for cold start boilers

Low Water Cut-Off:

Provides protection against potentially dangerous low water conditions

Boiler Reset Control:

Utilizes Thermal Targeting™ technology to conserve fuel by monitoring heating demand and establishing target boiler temperatures below the high limit setting

The TRIO® Commercial Boiler by PurePro® with its highly efficient, 3-pass design offers Multi-Fuel flexibility, by using either oil or gas burners. The GG20 cast-iron block, with a 58 PSI rating and easy access swing door, is unsurpassed in durability and efficiency, providing years of trouble-free operation.

The 7 models ranging from 240 to 629 MBH, are suitable for commercial or multi unit buildings. Systems are extensively tested and are ASME certified.

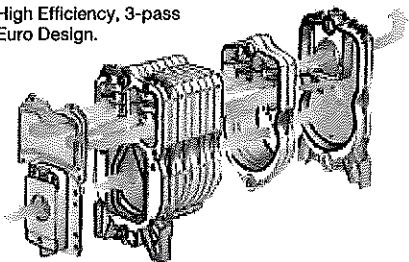
The TRIO Commercial Heat Exchanger Path is up to 15 feet in length, and the 3-pass design heats more surface area per gallon burned, with 25% less heat lost than pin-type boilers.



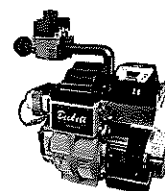
Shown with Riello Oil Burner

**Industry leading 20 year
Limited Warranty**

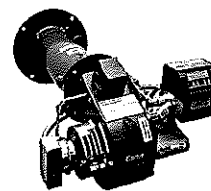
High Efficiency, 3-pass
Euro Design.



Optional Burners:



*Beckett CG
Gas Burner*



*Carlin 301
Gas Burner*

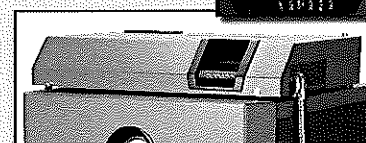
PurePro Energy Manager Plus II

The optional PurePro Energy Manager Plus II integrates a five-zone relay board, boiler aquastat, low water cutoff, and boiler reset. This simple-to-use control comes completely pre-wired.

The PurePro Energy Manager Plus II features the Honeywell AQ25042B multiple zone control and the Hydrolevel 3250 HydroStat. The HydroStat 3250 uses Thermal Targeting to match the heat load and boiler water temperature.

To further enhance fuel efficiency, the fuel smart HydroStat is also equipped with a thermal pre-purge feature. When activated, the control will purge standing heat in the boiler at the start of any thermostat call, supplying the free latent energy to the heating zone that is calling.

FuelSmart
HydroStat 3250



Boiler Mount

**5 year
Warranty**

Ratings

Boiler / Jacket / Trim / Package #	Firing Rate (#2 Fuel)	Oil Input BTU/hr	Oil Output BTU/hr	Net Output (BTU/hr)	Oil Combustion Efficiency	Gas Input BTU/hr	Gas Output BTU/hr	Gas Combustion Efficiency	Net Output (Sq. ft.)	Water Capacity (gal.)	Shipping Weight
PROPC6230 (Assembled Block)	2.30	322,000	276,000	240,000	85.7	322,000	268,000	83.2	1600	17	1170
PROPC7290 (Assembled Block)	2.90	406,000	352,000	306,000	86.7	406,000	342,000	84.2	2040	20	1300
PROPC8350 (Assembled Block)	3.50	490,000	426,000	370,000	86.9	490,000	413,500	84.4	2465	23	1435
PROPC9410 (Assembled Block)	4.10	574,000	501,000	436,000	87.3	574,000	487,900	85	2910	26	1540
PROPC10470 (Assembled Block)	4.70	658,000	575,000	500,000	87.3	658,000	559,300	85	3335	29	1660
PROPC11530 (Assembled Block)	5.30	742,000	649,000	564,000	87.4	742,000	631,400	85.1	3760	32	1785
PROPC12590 (Assembled Block)	5.90	826,000	723,000	629,000	87.5	826,000	703,700	85.2	4195	35	1900

Burners

Boiler Model #	Oil Burner Model #	Oil Burner Part #	Gas Burner Model #	Gas Burner Part #
PROPC6230	Riello F10	706016	Beckett CG10 Carlin 201 Riello 400	706026 706056 706066
PROPC7290	Riello F15	706017	Beckett CG10 Carlin 301 Riello 900	706027 706057 706067
PROPC8350	Riello F15	706017	Beckett CG10 Carlin 301 Riello 900	706028 706058 706068
PROPC9410	Riello F15	706017	Beckett CG10 Carlin 301 Riello 900	706029 706059 706069
PROPC10470	Riello F15	706017	Beckett CG10B Carlin 301 Riello 900	706030 706060 706070
PROPC11530	Riello F20	706021	Beckett CG10B Carlin 301 Riello 900	706031 706061 706071
PROPC12590	Riello F20	706021	Beckett CG10B Carlin 301 Riello 900	706032 706062 706072

Dimensions (all models)

Cabinet Height	41-1/8"
Cabinet Width	25-3/8"
Bare Boiler Block Width	19"
Supply Outlet Size NPT	2-1/2"
Supply Outlet Height C.L.	34-1/8"
Return Size NPT	2-1/2"
Return Outlet Height C.L.	3-7/8"
Flue Outlet Diameter	8"
Flue Outlet Height C.L.	27-1/4"

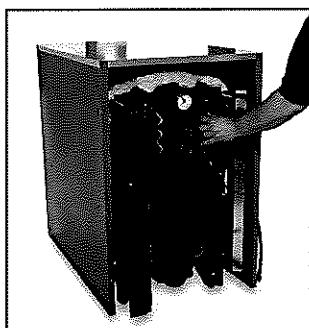
Dimensions

Boiler Model #	Cabinet Length	Bare Boiler Block Length
PROPC6230	37-1/2"	34-3/8"
PROPC7290	42-1/4"	39-1/8"
PROPC8350	46-7/8"	43-3/4"
PROPC9410	51-3/4"	48-1/2"
PROPC10470	56-3/8"	53-3/8"
PROPC11530	61-1/8"	58"
PROPC12590	65-7/8"	62-3/4"

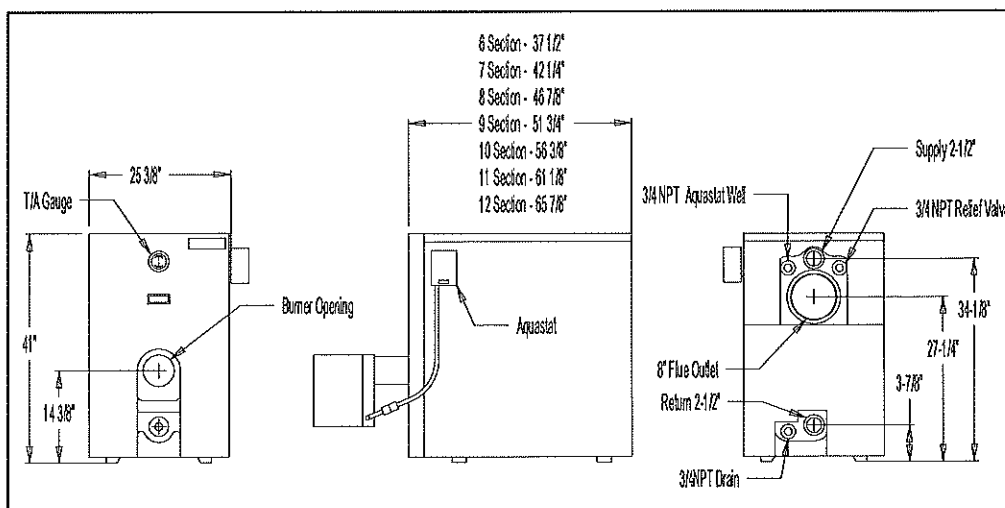
Commercial Parts Kit

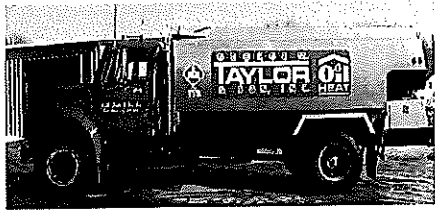
(Standard w/all boilers, kit packed with burners)

- 1/2" x 1/4" Bushing
- 3/4" Street Elbow
- 30 PSI Relief Valve
- 3/4" x 6" Nipple
- 3/4" x 5" Nipple
- 3/4" Elbow
- 2-1/2" x 2-1/2" x 3/4" Tee (1)
- 2-1/2" Elbow
- 2-1/2" x 8" Nipple
- 2-1/2" x 4" Nipple
- T & A Gauge
- 3/4" Drain Valve
- HydroStat 3250
- Aquastat
- Immersion Well
- 10' Temperature Probe
- L4006E1109 B 130 to 240°F
- 3/4" Standard Well
- Ground Wire
- Stainless Floor Blanket

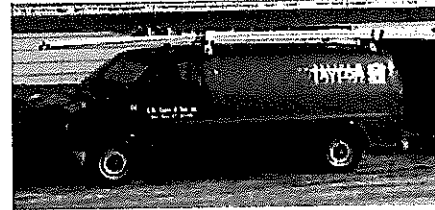


Superior serviceability.
Complete access to all three passes.





515,000 BTUS
4.5 gallons per hour to run



Sta

PROPOSAL

TAYLOR OIL, INC.

PO Box 1199, Dover Plains, NY 12522

TOLL FREE 1-800-553-2234

info@gmtayloroil.com

HEATING OILS - BURNER SALES & SERVICE - PLUMBING - AIR CONDITIONING - WATER SYSTEMS

**** VISIT US ON THE WEB @ WWW.GMTAYLOROIL.COM ****

Proposal Submitted to: Town of Pine Plains
PO Box 1083
Pine Plains, NY 12567

January 28, 2021

Account #544100
Town Highway Garage

We hereby submit specifications and estimates for:

Taylor Oil & Propane proposes the replacement of the existing hot water boiler for the Town Highway Garage. The existing hot water boiler will be disconnected from the heating system. It will be knocked down and removed from the building. A new Weil McLain 580 cast iron boiler will be assembled in the same location. The boiler will be piped into the existing heating system piping for the supply lines and return lines. A new burner will be mounted on the new boiler block and hooked up to the electric and fuel system. The boiler and heating system will be tested upon completion.

Knock down of existing boiler:	\$3,240.00
Assembly and connection of new boiler:	\$14,813.00
Carlin 301 CRD burner 580 set up oil:	\$3,144.22
Carlin LP gas burner set up:	\$3,684.71
Gas works from tank to LP burner:	\$1,300.00

Total cost oil: \$21,197.22

Total cost LP: \$23,037.71

- 1. WE ACCEPT PAYMENT BY CREDIT CARD IF YOU CHOOSE: MASTER CARD, VISA, DISCOVER**
ACCOUNT #: _____ EXPIRATION DATE: _____
- 2. PAYMENT TERMS: 1/2 AT TIME OF CONTRACT SIGNING, 1/2 ON JOB COMPLETION**
- 3. PURCHASER AGREES TO BE RESPONSIBLE FOR ALL COSTS AND ATTORNEYS FEES INCURRED BY THE SELLER TO COLLECT ANY BALANCE DUE.**

All material is guaranteed to be as specified. All work will be completed in a workmanlike manner according to standard practices. Any alterations or deviation from the above specifications involving extra costs will be executed only upon written orders, and will become an extra charge over and above the estimate. All agreements contingent upon strikes, accidents or delays beyond our control. If collection action for payment of contract becomes necessary at any time, all fees associated with collection will be added to any amounts owed. APR is 21% on any amounts past terms. Owner to carry fire, tornado, and other necessary insurance. Our workers are fully covered by Workman's Compensation Insurance.

PATRICK J. HURLEY, SERVICE MANAGER

This proposal may be withdrawn by Taylor Oil if not accepted within 30 days, except where a date of expiration is specified. The above prices, specifications and conditions are satisfactory and are hereby accepted. I authorize Taylor Oil Inc. to do the work as specified. Payment will be made as outlined above.

Signature: _____

Date of Acceptance: _____ Signature: _____



AMERICAN HEATING & COOLING
1103 Dutchess Turnpike Poughkeepsie, NY 12603
Phone 845-473-1966 Fax 845-473-5713

Estimate #2017
February, 7 2021

To: Pine Plains Highway Department
Re: Boiler
Attn: Heather M. Emerich Highway Superintendent

We are pleased to provide pricing for the Pine Plains Highway Department located at 20 Hwy Blvd in Pine Plains, NY.

Scope of Work:
Installation of one of the boiler options listed below.

Single Boiler Options:

Option One: One Smith 702,000 btu oil fired boiler.

Base Price: \$59,525.00

Option Two: One LAARS Mighty Therm2 750,000 btu 85% efficiency propane fired boiler.

Base Price: \$81,080.00

Option Three: One LAARS NeoTherm 750,000 btu 96.6% high efficiency propane fired boiler.

Base Price: \$89,500.00

Two Boiler Option:

Option One: Two LAARS Mighty Therm2 400,000 btu 85% propane fired boiler.

Base Price: \$88,060.00

Option Two: Two LAARS NeoTherm 400,000 btu 96.5 high efficiency propane fired boiler.

Base Price: \$96,460.00

Add to Base Price:

New Controls:	\$1,700.00
New Circulators:	\$7,075.00
Glycol (freeze protection)	\$25.00 per gallon

Included:

Boiler(s)
Thermostat/ Low voltage wiring
Removal of Existing equipment
Venting (reuse existing chimney opt 1)
3" Welded header loop only
Reconnect to existing supply and returns
Reconnect to existing controls
Power wiring (electrical)
Reuse existing oil tank and lines (oil option)
Gas line (propane options)
Propane tank (propane option)
Reconnect to existing oil lines (oil option)
Excavation/trenching propane tank (propane option)
Reuse existing circulators
Insulate new piping only
Expansion tank
Water feed and back flow preventer
Pressure testing
Filling/purging
Permits
Start up
Labor (PERVAILING WAGE)
Warranty (One-year labor and Manufactures Warranty)

Excluded:

Patching/Painting
Structural steel or framing
Fire alarm wiring and integration
Temporary climate control
Repairs to existing chimney
Repairs to existing equipment and materials
Stamped Engineered drawings
Removal of existing oil tank

Notes:

1. This proposal is based on our normal work day (7:00am-3:30pm M-F) and does not include any off hours work.
2. This proposal is based on prevailing wage.
3. American Heating and Cooling is not responsible for existing equipment and conditions of materials. Any repairs that are needed will be quoted.

Work Authorized

Anthony Ortiz

Work Approved

81b

Homestead Improvements & Water Systems, Inc.

63 Meusel Rd

Pine Plains, N.Y. 12567

Phone: 518-398-5706 Email: rhiws@aol.com

Proposal & Acceptance

Name: Town of Pine Plains Highway Garage
Mailing Address: P.O.Box 955 Pine Plains, N.Y. 12567
Site Address: Highway Garage Rt.199 Pine Plains, N.Y. 12567
Job Description: Water treatment for hardness, iron, odor
Date: 3-18-20

We hereby submit specifications and estimates for:

Installation of:

- 1.5 CF Sanitizer Softener to remove hardness Ferrous iron.
- 2.5 CF Aeration Centaur Carbon Filter for sulfur and residual taste and odor removal.
- 4x20x1micron cartridge filter

We Propose hereby to furnish materials and labor- complete in accordance with the above specifications, for the sum of:

Dollars \$ 7130.00

Payment to be made as follows:

Upon completion

All material is guaranteed to be as specified. All work to be completed in a workmanlike manner according to standard practices. Any alteration or deviation from above specifications involving extra costs will be executed only upon written orders, and will become an extra charge over and above the estimate. All agreements contingent upon strikes, accidents or delays beyond our control. Property owner to carry fire, tornado and other necessary insurance.

Authorized signature Richard J. Cummings

Note: This proposal may be withdrawn if not accepted within 30 days.

Acceptance of proposal-The above prices, specifications and conditions are satisfactory and hereby accepted. You are authorized to do the work as specified. Payment will be made as outlined above.

Signature _____ Signature _____

Date _____

816

Alice@pineplains-ny.gov

From: Heather Emerich, Highway Superintendent Town of Pine Plains <highway@pineplains-ny.gov>
Sent: Thursday, February 11, 2021 10:50 AM
To: supervisor@pineplains-ny.gov; Alice@pineplains-ny.gov
Subject: FW: All Star Water treatment quote.

Please find quote below for water treatment equipment from All Star Water.

Heather

Heather Emerich

Highway Superintendent
Town of Pine Plains
P.O. Box 955
Pine Plains, NY 12567
(518) 398-6662 phone
(518) 965-1876 cell
(518) 398-8603 fax

DISCLAIMER: This email message, including any attached files and subsequent replies, is intended only for the exclusive use of the individual or entity to which it is addressed and may contain information that is proprietary, privileged, confidential and/or exempt from disclosure under applicable law. If the reader of this email message is not the intended recipient, you are hereby notified that any viewing, copying, disclosure or distribution of this communication is strictly prohibited. If you have received this email in error, please notify the sender immediately by either telephone or email, and delete the original and any copies from your computer system. Thank you.

From: philip coratti <pcoratti1@gmail.com>
Sent: Tuesday, February 9, 2021 12:27 PM
To: Highway@pineplains-ny.gov
Subject: Fwd: All Star Water treatment quote.

Sent from my iPad

Begin forwarded message:

From: philip coratti <pcoratti1@gmail.com>
Date: February 9, 2021 at 12:23:23 PM EST
To: Highway@pineplains-ny.gov
Subject: All Star Water treatment quote.

All Star Water
1225 rt 9g
Hyde Park NY 12538
845-229-7605

\$3990.

1 - 10x54 Iron / Sulfur filter . Charger brand system , 5 year warranty on parts ,fleck air valve with fiberglass tank Price. \$2495 installed

1 - 32 K meter Water Softener . Charger meter system , fiberglass tank , 300 lb salt tank , 5 year warranty on parts Price. \$1495 installed

Units are our in stock and can be installed immediately.

Some of our customers are LHV precast Kingston, Wappingers Central schools ,McDonald's restaurants

Philip Coratti

All Star Water

In business over 50 years

Sent from my iPad



HIGHWAY THE WATER SOURCE

www.TheWaterSource.com

1234 Route 9
Wappingers Falls, NY 12590
(845) 297-1600



Name <u>Heather Emerich</u>		DIRECTIONS	
Address <u>20 Highway Boulevard</u>		County	Map
City <u>Pine Plains</u> State <u>NY</u> Zip <u>12567</u>		Grid	
Phone (H) _____ (W) _____			
Email <u>1</u> (C) <u>518-398-1662</u>			
Source _____ Appt. # _____ Time _____ Date <u>2/11/11</u>			
WATER ANALYSIS			
Hardness <u>14</u> gpg + Iron <u>4.0</u> ppm + Mn <u>.2</u> ppm			
Occupants _____ Compensated Hardness Total _____			
TDS <u>281</u> ppm Na _____ pH <u>7.4</u> H ₂ S _____ ppm			
Alk _____ ppm Cu _____ ppm Cl _____ ppm Other _____ ppm			
Bacteria Y - N SRB's Y - N IRB's Y - N			
EQUIPMENT PURCHASE			
QTY	DESCRIPTION / MODEL	PRICE	
1	Kinetico Synto 135	\$285	
1	Unimark CIPF Snow	\$35	
	Filter		
No performance guarantee, expressed or implied, applies if above water characteristics change.			
Installation		\$400.00	
Installation of ice maker		\$125.00	
Salt 200 lbs. (4 x 50 lb. bags) @ \$9.70 ea.		\$38.80	
Equipment Disposal _____ @ \$45 per unit			
Sub Total			
Promotions			
TOTAL		<u>\$569.00</u>	
Down Payment			
Balance Due on Installation			
Finance _____ Pick up check for _____			
Card # _____ Exp _____			
RIGHT OF CANCELLATION			
I MAY CANCEL THIS AGREEMENT WITHOUT PENALTY OR OBLIGATION ANYTIME PRIOR TO MIDNIGHT OF THE THIRD BUSINESS DAY FROM THE CONTRACT DATE. "I, the debtor, am responsible for all collection costs, court costs and or attorney's fees if my account becomes delinquent." Equipment purchase includes up to 10' of plumbing. Price subject to change after 90 days. The Water Source is not responsible for sheet rock repairs, replacement electrical work and the like. FOR TERMS AND CONDITIONS PLEASE TURN PAGE OVER.			
Purchaser _____		Date _____	
Authorized Rep. _____		Date <u>2/17/21</u>	
		Installation Date _____ AM PM	
		Remove Existing Equipment? Y - <u>N</u> Brand _____	
		<u>Private Well</u> Community Well Municipal	
		PUMP TYPE: Jet - <u>Submersible</u> - Voltage 110 220	
		MATERIAL: <u>Copper</u> PVC Aqua Pex Poly Galvanized	
		SIZE: 3/8" 1/2" <u>3/4"</u> 1" 1 1/4" 1 1/2" 2"	
		DRAIN: Build P Trap <u>Existing Trap</u> Length _____	
		MATERIAL: Copper ABS (black) PVC (White) Cast Iron	
		SIZE: 1 1/4" 1 1/2" 2" 3" 4"	
		SINK TYPE: Porcelain Stainless Granite Other _____	
		DRILL: L - R or REMOVE: Spray Nozzle / Soap Dispensor	
		ICEMAKER: Y - N Route _____	
		LOCATION: Basement Under Sink Faucet Style _____	
		ELECTRIC: Existing Outlet Extension Cord Needs Outlet*	
		*Customer to provide extension cord or electrical outlet	

TERMS AND CONDITIONS-EQUIPMENT SALE

1. It is understood and agreed that the title of the said property shall remain with The Water Source until the whole amount of the purchase price has been paid.
2. It is further understood that The Water Source shall not be responsible for damage or delay due to strikes, fires, accidents, inability to secure material labor or transportation, inclement weather or acts of God caused beyond its control.
3. Any delays in installation caused by the purchaser may result in a price change in equipment, labor or materials increase.
4. It is further mutually agreed that this contract may be assigned by The Water Source and the terms and agreements herein contained shall bind, apply, and insure to the heirs, assigns, successors, executor and administrators of the parties hereto.
5. In the event the purchaser defaults by failure to pay under this contract, The Water Source shall have the right to take possession of equipment and all monies paid up to the time of said default as rent and depreciation on said property and/or bring legal action to collect all monies due under the terms of this agreement.
6. In the event an account become delinquent, a late charge of 1 1/2% per month (18% per annum) or fraction thereof will be added to account.
7. The purchaser agrees to pay reasonable cost and attorneys' fees incurred in the event of The Water Source enforcing their rights under this agreement.
8. If purchaser fails to pay in full for equipment, The Water Source may enter the premises without notice and retake possession of and remove equipment without process of law and without liability for trespass or other damage whatsoever.
9. Pressure Reducing Valves. According to New York codes, all homes on municipal or community water systems are required to have Pressure Reducing Valves (PRV) installed prior to the water meter. The Water Source shall not be responsible for damages due to failed or missing PRVs. Excessive pressure will void warranties.
10. Water quality and condition may change in the future, therefore requiring additional investment in equipment or modification of system may be needed. Tannin, hydrogen sulfide, bacterial iron, and bacteria are examples.
11. Hot water heater anode rods may need to be removed if an odor develops in the hot water. The Water Source is not responsible for removal of these rods.
12. Sediment filters are recommended to remove sand before any water conditioning equipment. It is the responsibility of the purchaser to clean and replace cartridges as necessary. Failure to do so will void warranty. Failure to utilize a sediment filter on a new well will void warranty.
13. Iron bacteria is a problem condition that may occur or develop in a well system at anytime. Conventional softeners and filters are not designed to correct this particular problem. Should this problem occur, extra charges for service and/or equipment to handle the problem will be charged.
14. Warranty service is available during normal working hours (8:00 a.m. - 4:30 p.m.) Monday to Friday.
15. No electrical outlets or wiring can be done by The Water Source. It is the Owner/Builder's responsibility to provide all electrical outlets or wiring.

TERMS AND CONDITIONS-RENTAL EQUIPMENT

1. The Water Source agrees to furnish and customer agrees to pay The Water Source during the entire term indicated at the rental rate specified on rental contract. Rental rates may be changed due to cost of living or other factors.
2. All rental equipment furnished shall remain the exclusive property of The Water Source and may not be removed, relocated or altered without expressed written consent of The Water Source.
3. The Water Source will maintain and keep the Water Source's rental equipment in proper operating order without additional charge, unless repair or replacement is due to customer's negligence or misuse. Customer bears risk of loss or damage to the equipment by fire or other casualty.
4. The Water Source may enter premises during normal business hours to make repairs, exchanges or deliveries. Calls made outside normal business hours will be billed at standard overtime rates and/or minimum charge for labor.
5. Customer will not misuse, move or alter the equipment, nor deface or tamper with name plate. The equipment shall be surrendered to the Water Source upon the termination of this agreement in as good a condition as when installed, reasonable wear and tear excepted. Upon termination or customer's prior default The Water Source may enter the premises where equipment is located and remove and retake possession of the equipment without process of law and without liability; under no circumstances shall equipment be deemed affixed to or a part of the real estate. Customer will not assign this agreement without The Water Source's written consent and will not sell, mortgage, encumber, lease or part with possession of the equipment nor do or permit to be done anything which results or may result in the placing of a lien, encumbrance attachment, levy, or assessment upon the equipment.
6. This agreement shall remain in full force and effect for the specified term of the rental and shall be automatically renewed for further successive like terms unless The Water Source or customer notified the other of intention to terminate at the end of the initial term or renewal term thereafter, by written notice delivered at least thirty (30) days before the end of the term.
7. Monthly supplies (salt, chlorine, filters and other expendable items) are not included in stated rental rate.
8. On default by customer in payment or otherwise, The Water Source may immediately terminate this agreement without notice; the entire amount of contract shall become immediately due and payable and the deposit, if any shall be applied thereto, and The Water Source may also enter the premises and retake possession of and remove the equipment without process of law and without liability for trespass or other damage whatever.
9. Pressure Reducing Valves. According to New York Building codes, all homes on municipal or community water systems are required to have Pressure Reducing Valves (PRV) installed prior to the water meter. The Water Source shall not be responsible for damages due to failed or missing PRVs. Excessive pressure will void warranties.



KINETICO SYSTEMS vs. ELECTRIC WATER SOFTENERS



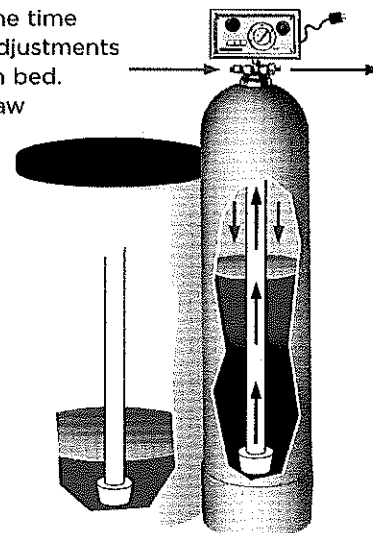
Kinetico®
water systems

Electric Water Softeners

All automatic water softeners were originally electric and used a clock that measured the time the unit was in service. A mechanical device, operated by the clock, required multiple adjustments to regulate the backwash, brining, rinse and other functions necessary to clean the resin bed. Water used in the regeneration cycle could be taken only from the source of supply—raw water which had not been cleaned or softened—and during this period the user was either without water or was provided with raw water, depending on the type of unit.

The cleaning mechanism had to be adjusted according to the type of water and the amount and time of water usage. Consideration had to be given for such things as laundry, dish washing, bathing and all water requirements so that an adequate supply of clean, soft water was available when these water-using functions were in progress.

Unexpected changes such as excessive water usage at odd times or power failures were not considered with this configuration, resulting in the loss of conditioned water. To overcome these unexpected changes, most electric units were programmed to regenerate more often than necessary resulting in a greater use of salt, water and electricity. With the electric unit, the possibility of electric shock was always present. And electrical components were prone to malfunction in the damp, salty environments in which water softeners were so often installed.



Electric System

Non-Electric Kinetico Water Conditioners

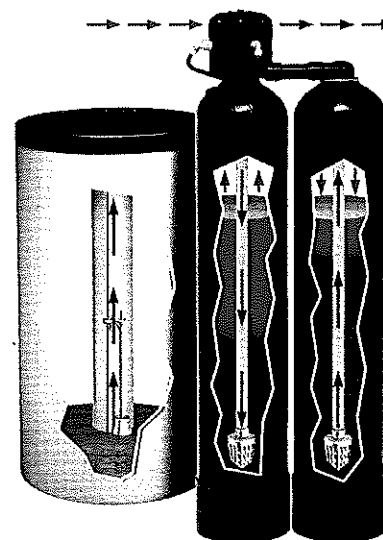
The coming of the Kinetico Water Conditioner, the first non-electric, twin tank, completely automatic system, removed all of the pitfalls associated with electric units and provided some added advantages.

Kinetico systems have two tanks joined by a single module that automatically regulates brining, backwashing, rinsing and shifting from one tank to the other when required. With Kinetico Water Conditioners, no adjustments are necessary. Kinetico systems measure the volume of water used with a meter that turns as water flows through it. Only clean, soft, filtered water flows through the non-corrosive internal control mechanism, which is completely sealed.

The use of two media tanks allows Kinetico Water Conditioners to regenerate with soft, clean water to more effectively renew the resin bed and greatly reduce the amount of salt and water needed. There is no "down time" when conditioned water is not available.

The possibility of electric shock is completely eliminated since Kinetico Water Conditioners use no electricity. Guest buttons or manual regeneration methods are not needed with Kinetico systems, and disconnection at vacation is unnecessary. Maintenance is reduced to the simple procedure of periodically checking the salt level. Kinetico uses no clocks, no electric valves, no electric sensing devices, or any other complicated arrangements necessary to regulate regeneration. Kinetico systems regenerate only when needed.

Kinetico is in a class by itself offering a completely new and virtually trouble-free system that provides an unlimited amount of clean, soft water at the very lowest cost and upkeep.



Kinetico System

"Kinetico" and the Kinetico logo are registered trademarks of Kinetico Incorporated, Newbury, Ohio.

WATER SOURCE
1234 ROUTE 9
WAPPINGERS FALLS, NY 12590
(845) 297-1600
WWW.THEWATERSOURCE.COM

PINE PLAINS STAKEHOLDERS COMMITTEE ADDITIONS TO DUTCHESS COUNTY POLICE REFORM AND MODERNIZATION PLAN

The following additions were made to the Dutchess County Police Reform and Modernization Plan by the Pine Plains Stakeholders Committee which convened during the Fall of 2020 to discuss and influence Police Reform in Pine Plains. The members were Darrah Cloud, Keary Hanan, Brenda Jackson, Sarah Jones, Lisa Michetti, and Nelson Zayas.

- The Pine Plains Stakeholders Committee recognizes the best practice of having a diverse police department which might ideally include a female officer and a Spanish-speaking officer.
- The Pine Plains Stakeholders Committee asks for meetings with the police and local officials with anyone planning a protest in our town, so as to set the parameters and create a relationship and agreements regarding behavior.
- ***Should Law Enforcement Have a Presence in Schools?***
- A number of school districts throughout Dutchess County have School Resource Officers (SROs). The decisions to keep such programs in place should be made by the school district in conjunction with the Town of Pine Plains Police Department and pertinent police agencies. The PPPD should be welcome in the schools as partners in the safety of the community.
- The PPPD and police agencies should create clear boundaries with school districts that officers are not used to address non-criminal offenses in schools. The State's guidance suggests:
- "...the creation of a memorandum of understanding or agreement between the police department and the school district so as to clearly establish their roles and responsibilities."
- The PPPD would like a clear agreement with the school district as to their relationship with the schools. This should include a good working relationship with the school SROs.
- The Town of Pine Plains Stakeholders Committee suggests creating story hours in the schools, and officers taking part at lunchtime, eating with children and getting to know them.

Best Practices in Procedural Justice

- Provide training in procedural justice, often referred to as principled policing.
- Include procedural justice principles and strategies in department policy manuals
- Adopt policies requiring officers to identify themselves by their full name, rank, and command (as applicable) and provide that information in writing to individuals they

have stopped. Policies should require officers to state and/or provide in writing the reason for the stop (including traffic stops) and the reason for the search if one is conducted. Many agencies across the nation have provided officers with business cards that include the pertinent information as well as provide directions on how to file a complaint. The Pine Plains Stakeholders Committee requests cards for each officer.

- The Pine Plains Stakeholders Committee suggests Touch-a-Truck events geared to police cars, a police relationship with the schools, so that children meet their police and come to know them, possible opportunities for ride-alongs, and events where they might meet a tracking dog or learn about other non-violent services which police provide. In addition, special attention to Implicit Bias Training for officers is essential.
- The Pine Plains Stakeholders Committee asks that officers be constantly made aware of all mental health programs and methods of assistance from the State and County and train to use them.
- The Pine Plains Stakeholders Committee requests QUARTERLY TRAINING in the use of weapons to ensure preparedness. In addition, they request adequate equipment that matches the equipment of other agencies/town police in Dutchess County so that when they are commanded to action in other municipalities they are prepared and protected. This pertains in particular to an adequate patrol rifle.
- The Pine Plains Stakeholders Committee suggests officers take part in “bull sessions” regularly as a means to assess officers’ experience of complex situations and review their actions. The Pine Plains Stakeholders Committee is deeply concerned about the well-being of its officers and strongly suggests the use of de-briefings, as an open forum for dialogue about incidents and events.
- The Pine Plains Stakeholders Committee acknowledges the difficulty of peer intervention in case of officer misconduct.
- The Pine Plains Stakeholders Committee wishes to implement a page on the Town website devoted to the PPPD, communicating new policies and procedures as well as news and introductions to officers.
- “The New York State Law Enforcement Accreditation Program, for example, establishes a standard of at least 21 hours of in-service training per year.”¹ ²The Pine Plains Stakeholders Committee suggests monthly training in some aspect of law enforcement

to provide consistent education and physical memory. In addition, any training relevant to a Part-time Police Department is strongly suggested.

- The Pine Plains Stakeholders Committee strongly endorses training as our greatest resource and asset to the PPPD, and strongly suggests there be constant consistent training and follow-through on this so that officers are up-to-date in the latest laws and practices.
- “Studies show that people working in law enforcement are at an elevated risk of physical and mental health issues when compared to the general population.”^{3 4}
- The Pine Plains Stakeholders Committee strongly suggests finding a way to implement the above ideas in officer well-being. Counseling help should be available to our officers when asked for.

- **Conclusion**

- According to a July Gallup poll, 58 percent of All Americans said major changes are needed to make policing better, while only 6 percent say no changes are needed.⁵ Another national poll, which was conducted under the joint direction of a Republican polling firm and a Democratic firm, found that nearly three quarters of voters supported a litany of reforms including, among other reforms: local hiring incentives, body camera requirements, co-responder programs, a national use-of-force standard, and public databases for officer misconduct.⁶ What’s more is the depth of the support for reform, as respondents “who expressed strong support for these proposals outweigh the combined weak and strong opposition by 30 points.”⁷ While at the same time, 67 percent of US Adults, including 61 percent of Black Americans, wanted the police presence in their neighborhoods to stay the same.⁸

³ https://www.governor.ny.gov/sites/governor.ny.gov/files/atoms/files/Police_Reform_Workbook81720.pdf

⁴ <https://journals.sagepub.com/doi/pdf/10.1177/0706743717723825>

⁵ <https://news.gallup.com/poll/315962/americans-say-policing-needs-major-changes.aspx>

⁶ <https://craftmediabucket.s3.amazonaws.com/uploads/JAN-cut50-July-2020-Survey-Topline-Final1.pdf>

⁷ <https://www.arnoldventures.org/stories/new-polling-finds-extraordinary-bipartisan-support-for-policing-reforms/>

⁸ <https://news.gallup.com/poll/316571/black-americans-police-retain-local-presence.aspx>

supervisor@pineplains-ny.gov

VPN (104)

From: Alice@pineplains-ny.gov
Sent: Wednesday, February 17, 2021 11:49 AM
To: 'James Jeffreys'; 'Kevin Jeffreys'
Cc: 'supervisor'
Subject: RE: VPN Town of Pine Plains

Thank you!!

Alice Hanback-Nuccio
Secretary to Town Supervisor
Town of Pine Plains, NY 12567
(518)398-8600x1

From: James Jeffreys <jjeffreys@necscorp.com>
Sent: Wednesday, February 17, 2021 11:45 AM
To: 'Alice@pineplains-ny.gov' <Alice@pineplains-ny.gov>; Kevin Jeffreys <kjeffreys@necscorp.com>
Cc: 'supervisor' <supervisor@pineplains-ny.gov>
Subject: RE: VPN Town of Pine Plains

CONFIRMED!

From: Alice@pineplains-ny.gov [mailto:Alice@pineplains-ny.gov]
Sent: Wednesday, February 17, 2021 11:40 AM
To: James Jeffreys <jjeffreys@necscorp.com>; Kevin Jeffreys <kjeffreys@necscorp.com>
Cc: 'supervisor' <supervisor@pineplains-ny.gov>
Subject: RE: VPN Town of Pine Plains

Hi Jim,
Thank you so much for this information. In summary, if we went with the 7100 model, the cost would be \$1499, plus set up cost of \$800 and a monthly fee of \$99, correct?
Please confirm. Thanks!
Alice

Alice Hanback-Nuccio
Secretary to Town Supervisor
Town of Pine Plains, NY 12567
(518)398-8600x1

From: James Jeffreys <jjeffreys@necscorp.com>
Sent: Wednesday, February 17, 2021 11:19 AM
To: 'Alice@pineplains-ny.gov' <Alice@pineplains-ny.gov>; Kevin Jeffreys <kjeffreys@necscorp.com>
Cc: supervisor <supervisor@pineplains-ny.gov>
Subject: RE: VPN Town of Pine Plains

Hello Alice!

Thank you for clarifying that not everyone would be on all of the time (or even at the same time).

If you wanted to allow everyone to communicate directly from home to the town hall we would need to set up a few items.

The router needs to be upgraded for certain.

Routers today (at least the good ones) are more like dedicated computing servers that focus on handling telecommunication links, and the better the router the faster it runs and the more users that can access it.

The Internet uses various protocols to share data securely – one of them is a VPN or Virtual Private Network.

To use it you would connect from a remote site (home) to the central site (town hall) using a piece of software that “talks” to the town hall router. Basically, the software knows how to tunnel through the Internet to the town hall and then negotiates a private connection using a very-long encrypted key – so it is totally secure.

One of the most popular options is OpenVPN because it is secure and the cost is manageable, relying mostly on professional IT people like us to set it up and manage it – we would arrange it so that the user when they logon remotely goes directly to their own computer.

Setup would take us a bit to create the users and security keys so I would budget \$800.

For the 5100 model fan less router option (lowest power consumption and very quiet) sits on top of equipment or on equipment shelf and handles up to 12 simultaneous remote connections the one-time cost is \$999 with maintenance support (to make sure everyone has the latest software and connection capability is \$50/m).



For the 7100 model (internal fans) is a faster Intel processor and is a rack-mountable device with more programmable ports for future-proofing and it would easily handle all 22 people for a one-time cost of \$1,499 with maintenance support (to make sure everyone has the latest software and connection capability is \$99/m).

VPN



We love the 5100 for small offices with periodic connection needs, but for a true permanent solution I would definitely recommend the 7100 as its more expandable and will undoubtedly last longer; of course no tax on anything.

Does this answer all of your questions in advance of the meeting?

Thank you,

Jim

From: Alice@pineplains-ny.gov [mailto:Alice@pineplains-ny.gov]
Sent: Wednesday, February 17, 2021 9:15 AM
To: James Jeffreys <jjeffreys@necscorp.com>; Kevin Jeffreys <kjeffreys@necscorp.com>
Cc: supervisor <supervisor@pineplains-ny.gov>
Subject: VPN Town of Pine Plains

Dear Jim and Kevin,
I hope this email finds you and yours healthy and well.

I am following up with our latest conversation concerning the possibility of the Town of Pine Plains working remotely and at full capacity. It is my understanding that this is possible by upgrading our VPN server. We would need to be able to run 22 computers on this network. Keep in mind that not all 22 machines would be running at the same time, nor in the same capacity, with some only being used for email.

Would you kindly work up an estimate for the larger VPN and the configuration of 22 computers, please?
Let me know if you have any questions. We have a Town Board meeting tomorrow night and it would be great to have an estimate to present to the Board, if possible. Thank you for your prompt attention to this matter.

Best,
Alice

Alice Hanback-Nuccio
Secretary to Town Supervisor
Town of Pine Plains, NY 12567
(518)398-8600x1

VPN

supervisor@pineplains-ny.gov

From: James Jeffreys <jjeffreys@necscorp.com>
Sent: Wednesday, February 17, 2021 11:19 AM
To: 'Alice@pineplains-ny.gov'; Kevin Jeffreys
Cc: supervisor
Subject: RE: VPN Town of Pine Plains

Hello Alice!

Thank you for clarifying that not everyone would be on all of the time (or even at the same time).

If you wanted to allow everyone to communicate directly from home to the town hall we would need to set up a few items.

The router needs to be upgraded for certain.

Routers today (at least the good ones) are more like dedicated computing servers that focus on handling telecommunication links, and the better the router the faster it runs and the more users that can access it.

The Internet uses various protocols to share data securely – one of them is a VPN or Virtual Private Network.

To use it you would connect from a remote site (home) to the central site (town hall) using a piece of software that “talks” to the town hall router. Basically, the software knows how to tunnel through the Internet to the town hall and then negotiates a private connection using a very-long encrypted key – so it is totally secure.

One of the most popular options is OpenVPN because it is secure and the cost is manageable, relying mostly on professional IT people like us to set it up and manage it – we would arrange it so that the user when they logon remotely goes directly to their own computer.

Setup would take us a bit to create the users and security keys so I would budget \$800.

For the 5100 model fan less router option (lowest power consumption and very quiet) sits on top of equipment or on equipment shelf and handles up to 12 simultaneous remote connections the one-time cost is \$999 with maintenance support (to make sure everyone has the latest software and connection capability is \$50/m).



For the 7100 model (internal fans) is a faster Intel processor and is a rack-mountable device with more programmable ports for future-proofing and it would easily handle all 22 people for a one-time cost of \$1,499 with maintenance support (to make sure everyone has the latest software and connection capability is \$99/m).



We love the 5100 for small offices with periodic connection needs, but for a true permanent solution I would definitely recommend the 7100 as its more expandable and will undoubtedly last longer; of course no tax on anything.

Does this answer all of your questions in advance of the meeting?

Thank you,

Jim

From: Alice@pineplains-ny.gov [mailto:Alice@pineplains-ny.gov]
Sent: Wednesday, February 17, 2021 9:15 AM
To: James Jeffreys <jjeffreys@necscorp.com>; Kevin Jeffreys <kjeffreys@necscorp.com>
Cc: supervisor <supervisor@pineplains-ny.gov>
Subject: VPN Town of Pine Plains

Dear Jim and Kevin,
I hope this email finds you and yours healthy and well.

I am following up with our latest conversation concerning the possibility of the Town of Pine Plains working remotely and at full capacity. It is my understanding that this is possible by upgrading our VPN server. We would need to be able to run 22 computers on this network. Keep in mind that not all 22 machines would be running at the same time, nor in the same capacity, with some only being used for email.

Would you kindly work up an estimate for the larger VPN and the configuration of 22 computers, please?

Let me know if you have any questions. We have a Town Board meeting tomorrow night and it would be great to have an estimate to present to the Board, if possible. Thank you for your prompt attention to this matter.

Best,
Alice